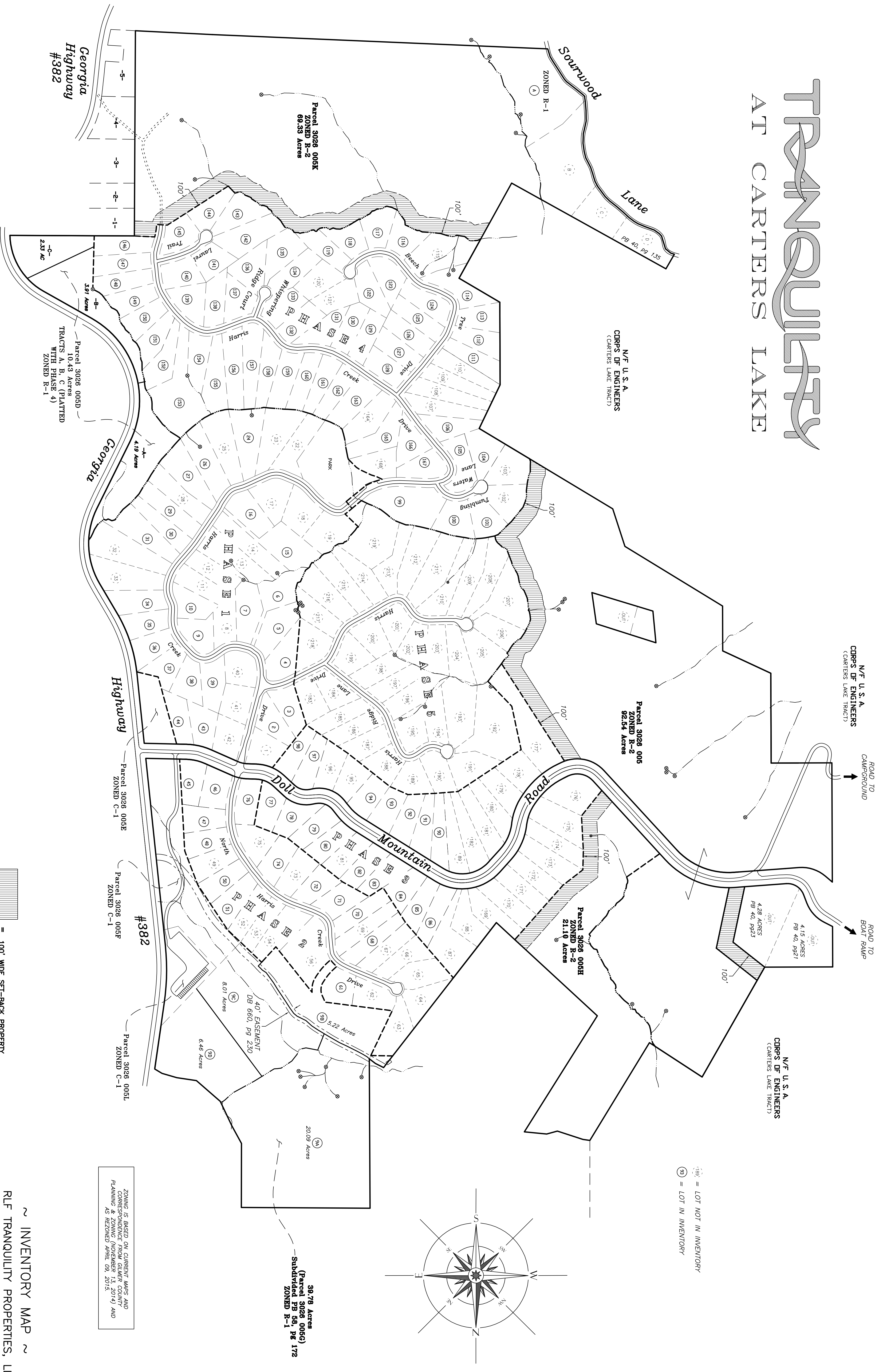


TRANQUILITY

AT CARTERS LAKE



PREPARED BY
CHASTAIN & ASSOCIATES, P.C.
 SURVEYING, PLANNING, CONSULTING
 Since 1995
 7706/276-7528
 WWW.GEORGIASURVEYOR.COM (770)889-1770

NOTE:
 ALL PLATTED LOTS IN PHASES 1 THROUGH 5
 ARE ZONED R-2

100' WIDE SET-BACK PROPERTY

ZONING IS BASED ON CURRENT MAPS AND
 CORRESPONDENCE FROM GILMER COUNTY
 PLANNING & ZONING DEPARTMENT 13, 2014 AND
 AS RECORDED 4/26/15, 05, 2015.

~ INVENTORY MAP ~

RLF TRANQUILITY PROPERTIES, LLC
 LAND LOT: 268, 269, 270, 271, 272, 273, 305 & 306
 DISTRICT: 25th SECTION: 2ND
 COUNTY: GILMER STATE: GEORGIA
 DATE: AUGUST 19, 2015

300 0 300 600 900
 GRAPHIC SCALE - FEET
 1" = 300'